

# Glandless Boiler Circulation Pump Services



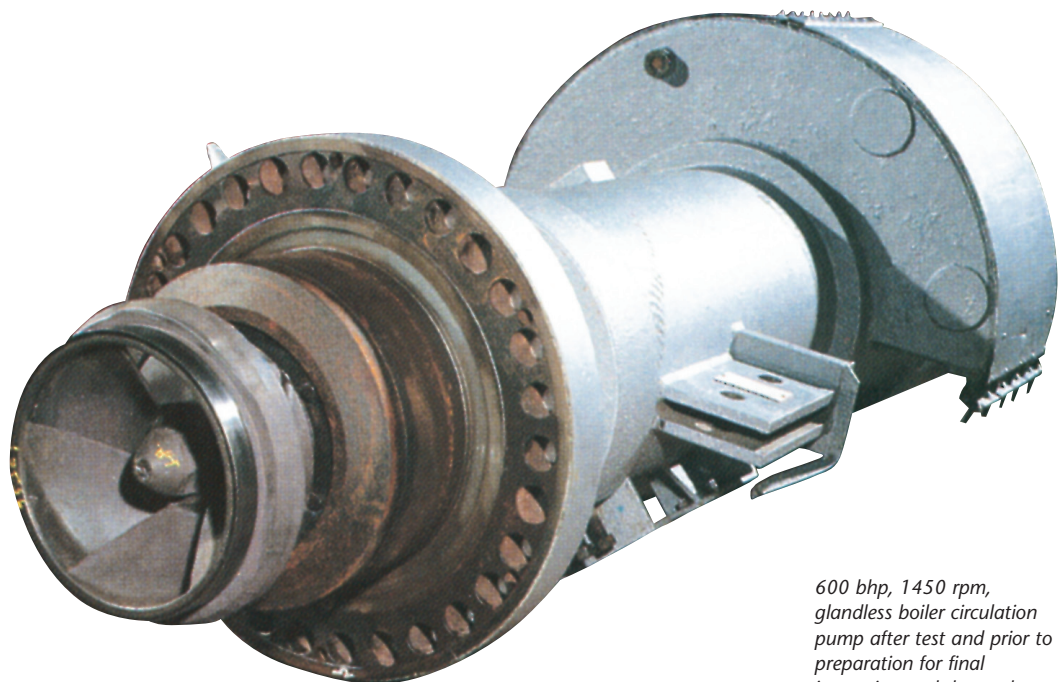
*3000 psig boiler circulator pump during re-build after rewind and major shop overhaul*

Weir Services Turbomachinery Engineering has the facilities to overhaul and repair these specialised pumpsets which can operate at conditions of 3000psig, temperatures of 350°C and up to 6.6kV.

Weir Services provide a complete service for both electrical and mechanical equipment, on-site repair, trouble shooting and boiler outage overhaul, (including removal from the boiler).

Pumpsets can be repaired on-site or returned to the service facility. This also applies to 'wet' motor rewinds. Motors overhauled off-site will be pressure tested to 1.5 times the system pressure and start checked.

Full documentation is given for all stages of overhaul and repair. On completion certificates will be issued for materials used, dynamic balance and testing.



*600 bhp, 1450 rpm, glandless boiler circulation pump after test and prior to preparation for final inspection and despatch*

## **Turbomachinery Engineering**

Humber Road  
Barton on Humber  
North Lincolnshire  
DN18 5BN  
United Kingdom

Tel: +44 (0)1652 632702  
Fax: +44 (0)1652 633401

E-mail: [turbomachinery@weir.co.uk](mailto:turbomachinery@weir.co.uk)  
Web: [www.weirservices.com](http://www.weirservices.com)

Part of The Weir Group PLC  
Web: [www.weir.co.uk](http://www.weir.co.uk)

Excellent  
Engineering  
Solutions

