
“I” model

Max power : 10 kW
Max piston rod load : 6.000 N
1 connecting rod
1 or 2 stages



“T” model

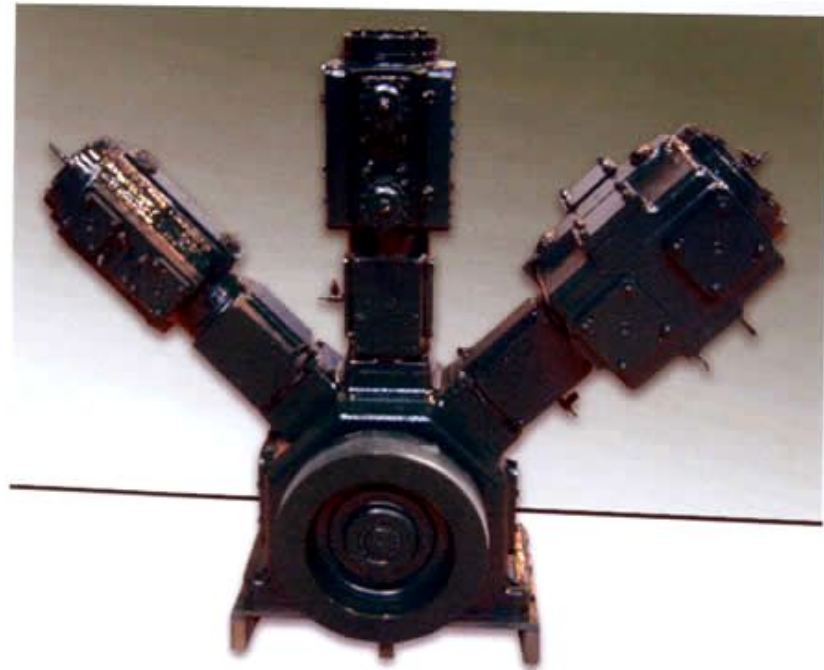
Max power : 75 kW

Max piston rod load : 15.000 N

1 to 3 connecting rods

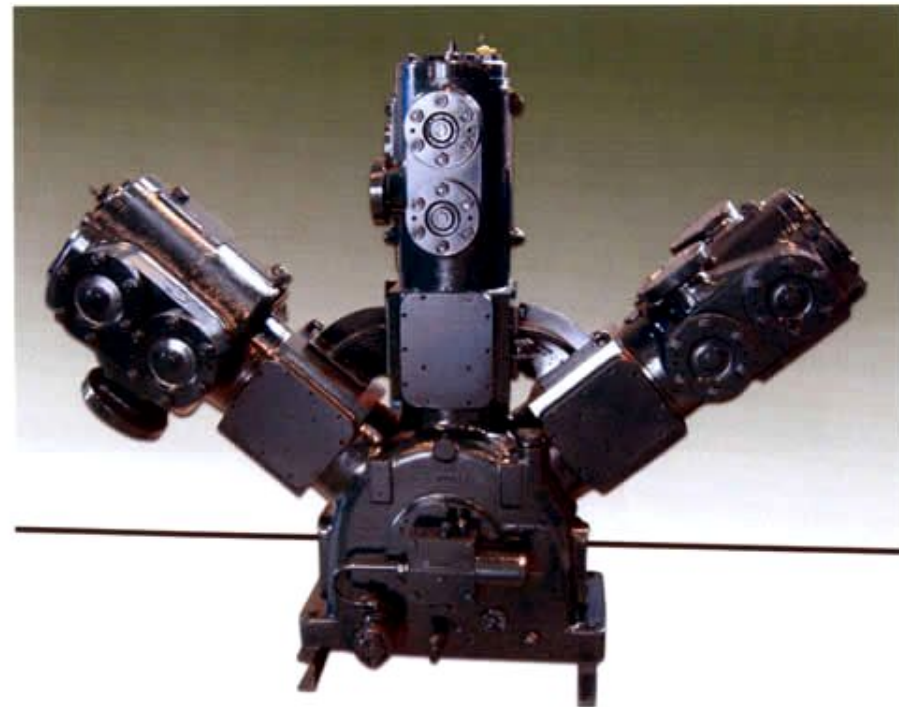
1 to 5 stages

SIAD MACCHINE
IMPIANTI



“W” model

Max power : 200 kW
Max piston rod load : 45.000 N
1 to 3 connecting rods
1 to 5 stages



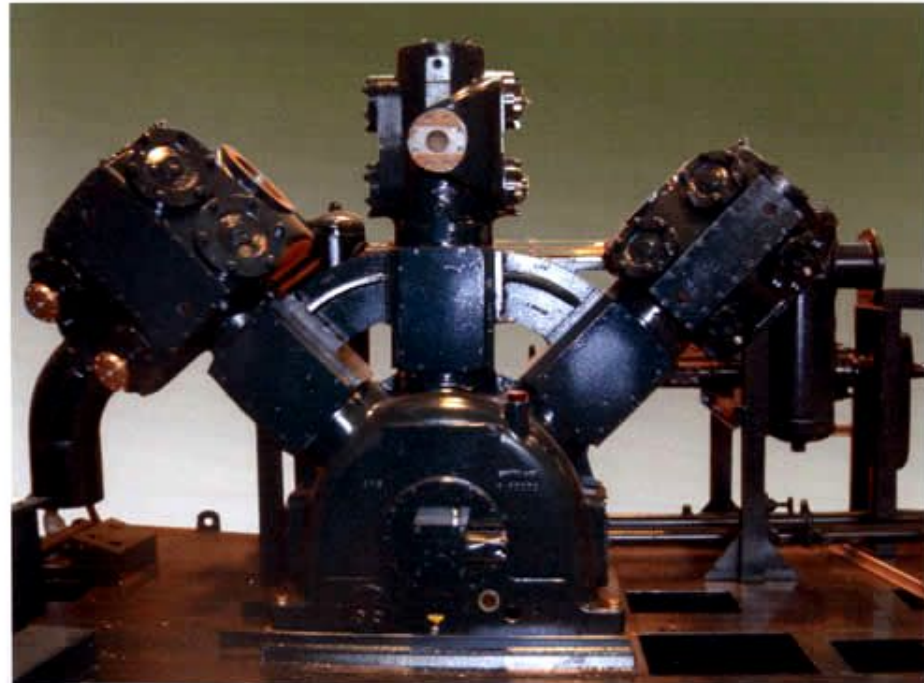
“M” model

Max power : 450 kW

Max piston rod load : 80.000 N

1 to 3 connecting rods

1 to 5 stages



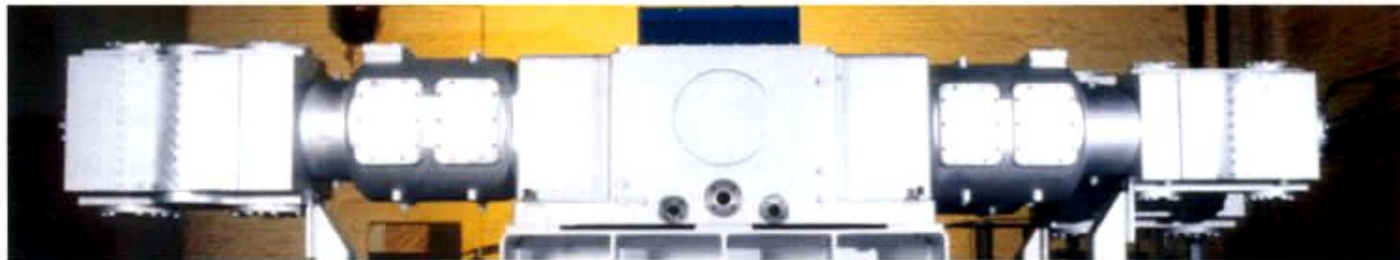
“HPX” model

Max power : 1000 kW

Max piston rod load : 115.000 N

2 to 4 connecting rods

1 to 6 stages



“HD” model

Max power : 1 500 kW

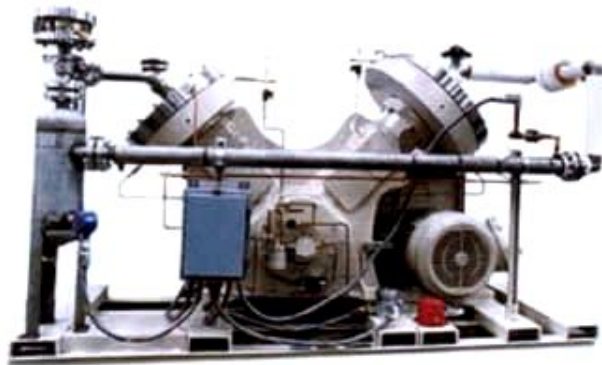
Max piston rod load : 207.000 N

2 to 4 connecting rods

1 to 6 stages



Diaphragm compressors



"V" frame



Vertical frame

- Construction : single, duplex, triple

SS diaphragm® **DIC** MACHINES, INC.

- Power : up to 300 kW



Balanced opposed frame