
Ammonia (NH₃) compressors



RECIPROCATING TYPE

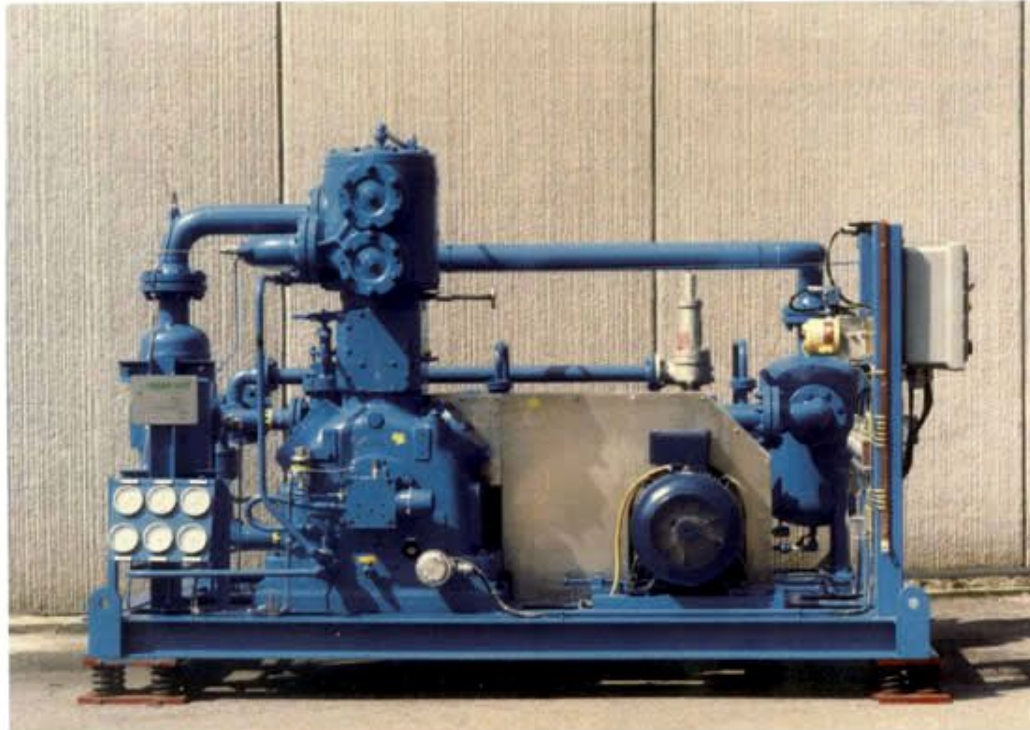
- Power : up to 1.500 kW
- Pressure : up to 30 bar (g)

Peculiarities of NH₃ piston compressors :

- To avoid loss of lethal NH₃ from the unit use of recovery system from packing ring
- No copper or copper alloys allowed in the unit

[Return to
Applications List](#)

Ammonia (NH₃)



Customer : France

Destination : China

Model : WS1-400-D1

Gas : NH₃

Capacity : 291 m³/h

Inlet pressure : 2 bar(g)

Discharge pressure :
15 bar(g)

Power : 36 kW

[Return to
Reference List](#)