
Carbon Dioxide (CO₂) compressors



RECIPROCATING TYPE

- Power : up to 1.500 kW
- Pressure : up to 100 bar (g)

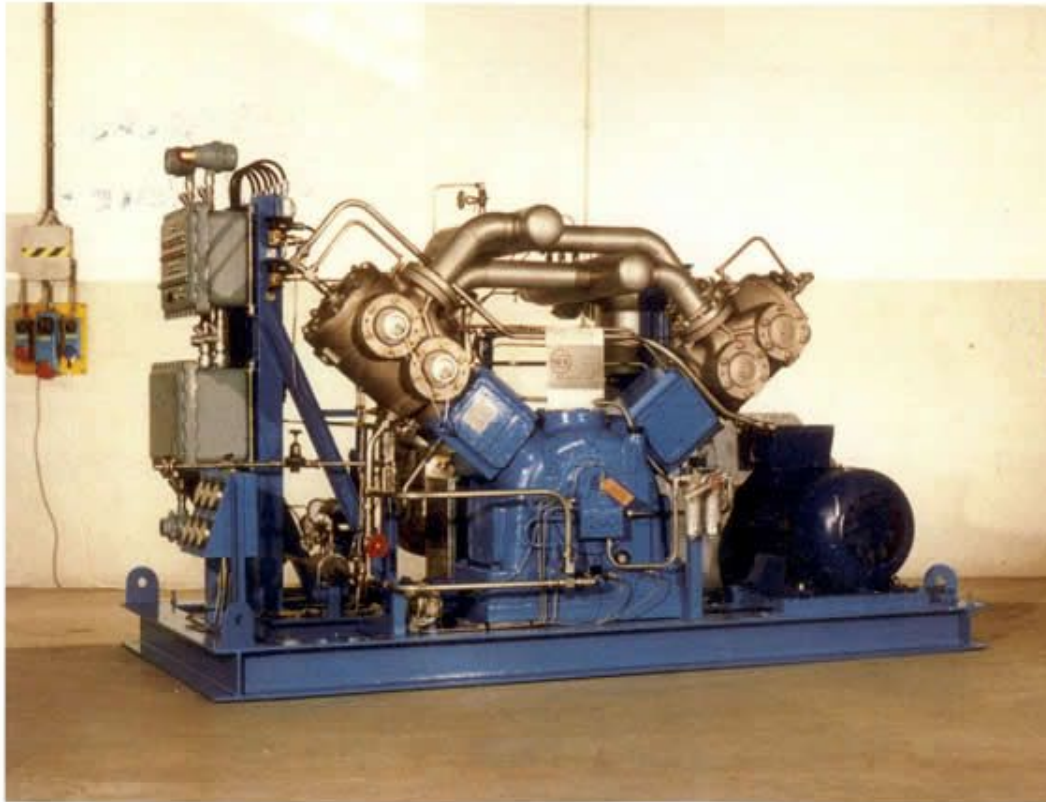
Peculiarities of CO₂ piston compressors:

The gas is in most cases humid, and so corrosive, so :

- Choice of specific materials (all in SS) dedicated to CO₂
- Very accurate drain of water condensate at the interstage and afterstage drums of the machine

[Return to
Applications List](#)

Carbon Dioxide (CO₂)



Customer : Italy
Installation : Italy
Model : WS2/580-S2
Gas : CO₂
Inlet Pressure : 5 bar(g)
Discharge Pressure :
18 bar(g)
Capacity : 640 Nm³/h
Power : 75 kW

[Return to
Reference List](#)