
Ethylene (C_2H_4) compressors



RECIPROCATING TYPE

- Power : up to 1.500 kW
- Pressure : up to 200 bar (g)

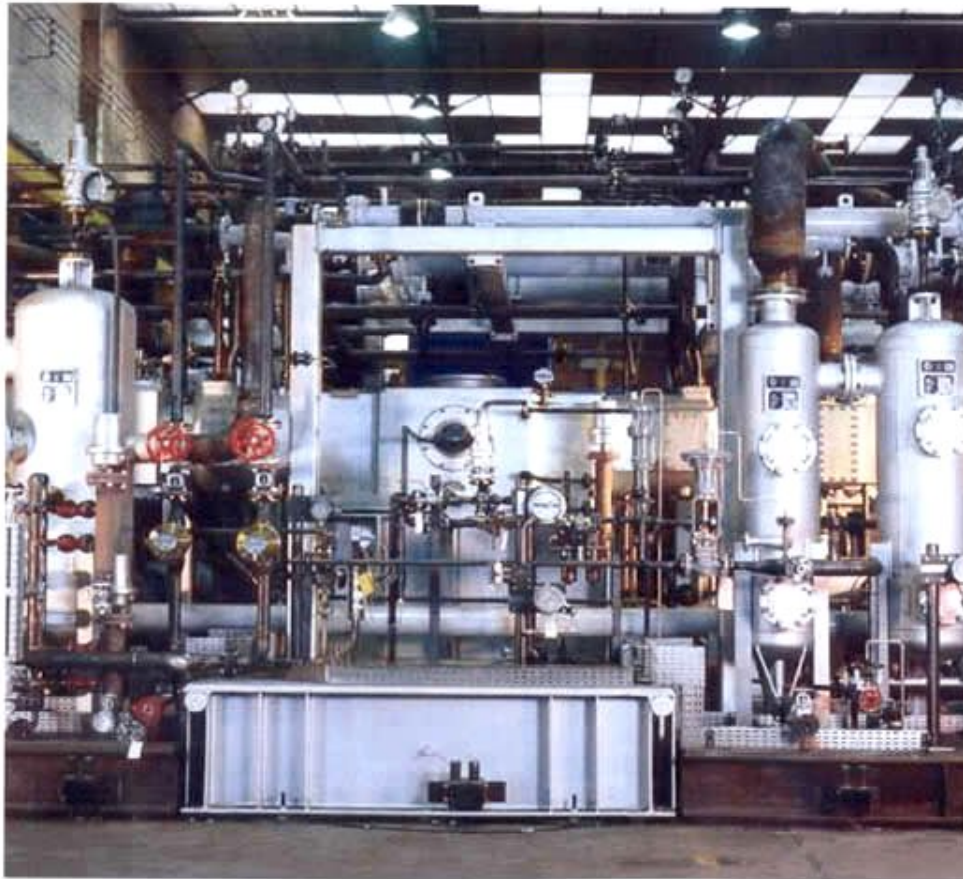


Peculiarities of C_2H_4 piston compressors :

- Recovery system from packing rings to avoid loss of C_2H_4 from the unit
- Purging of distance piece and crankcase with inert gas (nitrogen)

[Return to Applications List](#)

Ethylene (C₂H₄) (page 1 of 2)



Customer : France
Installation : Malaysia
Model : 4HPX 4 GT
Gas : Ethylene, Ethane,
Butene
Capacity : 1.970 Nm³/h
Inlet pressure :
1,2 bar(g)
Discharge pressure :
21,6 bar(g)

[Return to
Reference List](#)

Ethylene (C₂H₄) (page 2 of 2)



Customer : Italy
Installation : Iran
Model : WS1/065-A1
Gas : Ethylene
Capacity : 1.300 Nm³/h
Inlet pressure :
31 bar(g)
Discharge pressure :
50 bar(g)
Power: 48 kW

[Return to
Reference List](#)