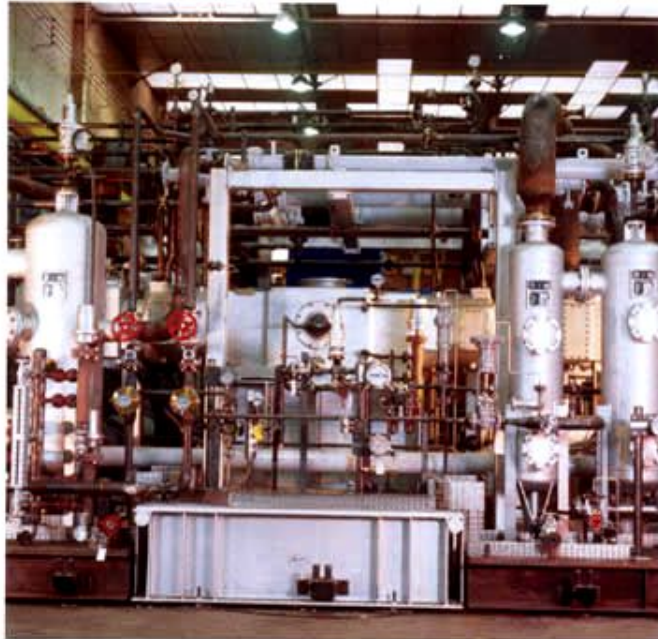


## Hydrocarbons compressors



### RECIPROCATING TYPE

- Power : up to 1.500 kW
- Pressure : up to 100 bar (g)



### Peculiarities of $C_nH_m$ piston compressors :

- Recovery system from packing rings to avoid loss of gas from the unit
- Purging of distance piece and crankcase with inert gas (nitrogen)

[Return to Applications List](#)

---

## Mixtures (page 1 of 3)

---



**Customer :** France  
**Destination :** France  
**Model :** 1 EHP 2 GT 175  
**Gas :** Natural gas  
**Capacity :** 12.685 m<sup>3</sup>/h  
**Inlet pressure :**  
from 16 to 24 bar(g)  
**Discharge pressure :**  
47 bar(g)  
**Power :** 400 kW  
**Motor Voltage :** 5.500 V

[Return to  
Reference List](#)

---

## Mixtures (page 2 of 3)

---



**Customer :** U.A.E.

**Destination :** U.A.E.

**Model :** 2EHPX2

**Gas :** flare gas with H<sub>2</sub>S

**Capacity :** 4.302 kg/h

**Inlet pressure :**

3,94 kg/cm<sup>2</sup>

**Discharge pressure :**

12,5 kg/cm<sup>2</sup>

**Power :** 280 kW

[Return to  
Reference List](#)

---

## Mixtures (page 3 of 3)

---



**Customer :** France  
**Installation :** Iran  
**Model :** MS3/3632-A1  
**Gas :** Flare gas  
**Capacity :** 8.846 Nm<sup>3</sup>/h  
**Inlet pressure :**  
0,3 bar(g)  
**Discharge pressure :**  
1,5 bar(g)  
**Power :** 300 kW

[Return to  
Reference List](#)