

---

## Hydrogen (H<sub>2</sub>) compressors

---



### RECIPROCATING TYPE

- Power : up to 1.500 kW
- Pressure : up to 250 bar (g)



### Peculiarities of H<sub>2</sub> piston compressors :

- To avoid brittle steel in contact with H<sub>2</sub>: treated rod, double distance piece
- Limit on the outlet temperature (135°C as per API 618)
- Recovery system from packing rings to avoid loss of H<sub>2</sub>
- Purging of distance piece and crankcase with inert gas (nitrogen)
- Use of special flanges, metallic gaskets to avoid loss of H<sub>2</sub>
- Special care on valve selection

[Return to Applications List](#)

---

## Hydrogen (H<sub>2</sub>) (page 1 of 5)

---



**Customer :**

France

**Installation :** Martinique

**Model :** 1 EHPX2GT

**Gas :** Hydrogen + H<sub>2</sub>S

**Inlet Pressure :**

52,9 bar(g)

**Discharge Pressure :**

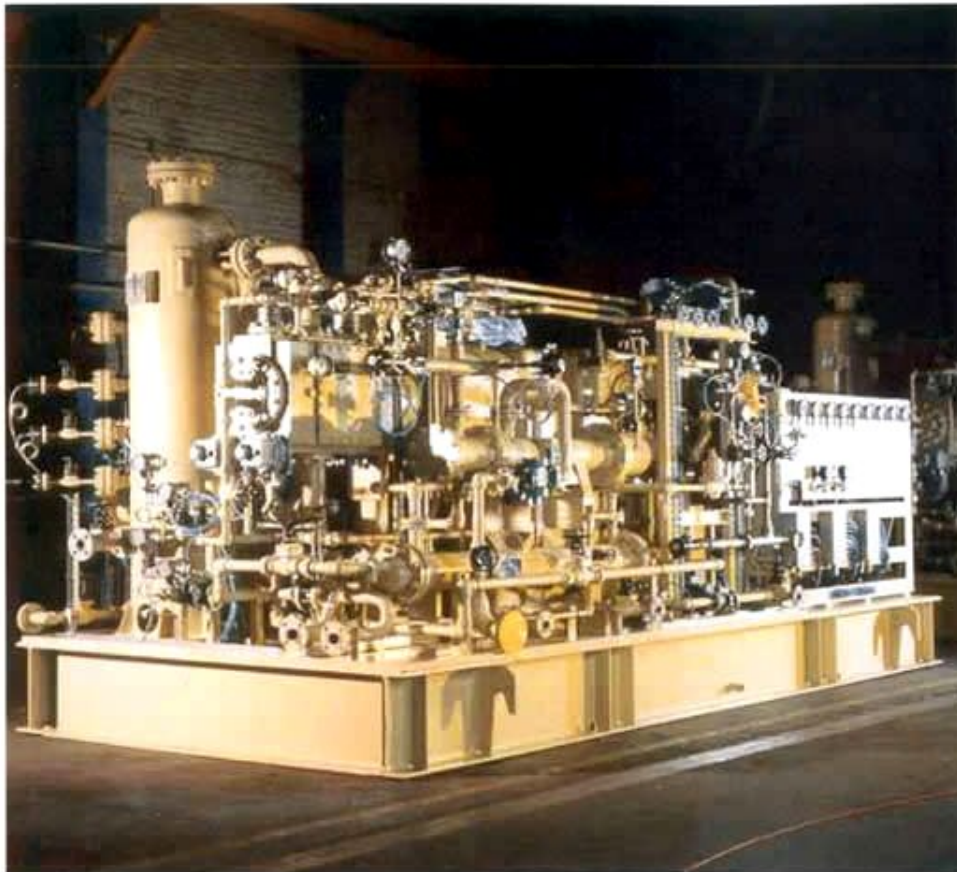
65,6 bar(g)

**Capacity :** 12.724 Nm<sup>3</sup>/h

**Power :** 320 kW

[Return to  
Reference List](#)

## Hydrogen (H<sub>2</sub>) (page 2 of 5)



**Customer :**

France

**Installation :** Martinique

**Model :** 2 EHPX 2 GT

**Gas :** Hydrogen + H<sub>2</sub>S

**Inlet pressure :** 19 bar(g)

**Discharge Pressure:**

65.6 bar(g)

**Capacity :** 2.461 Nm<sup>3</sup>/h

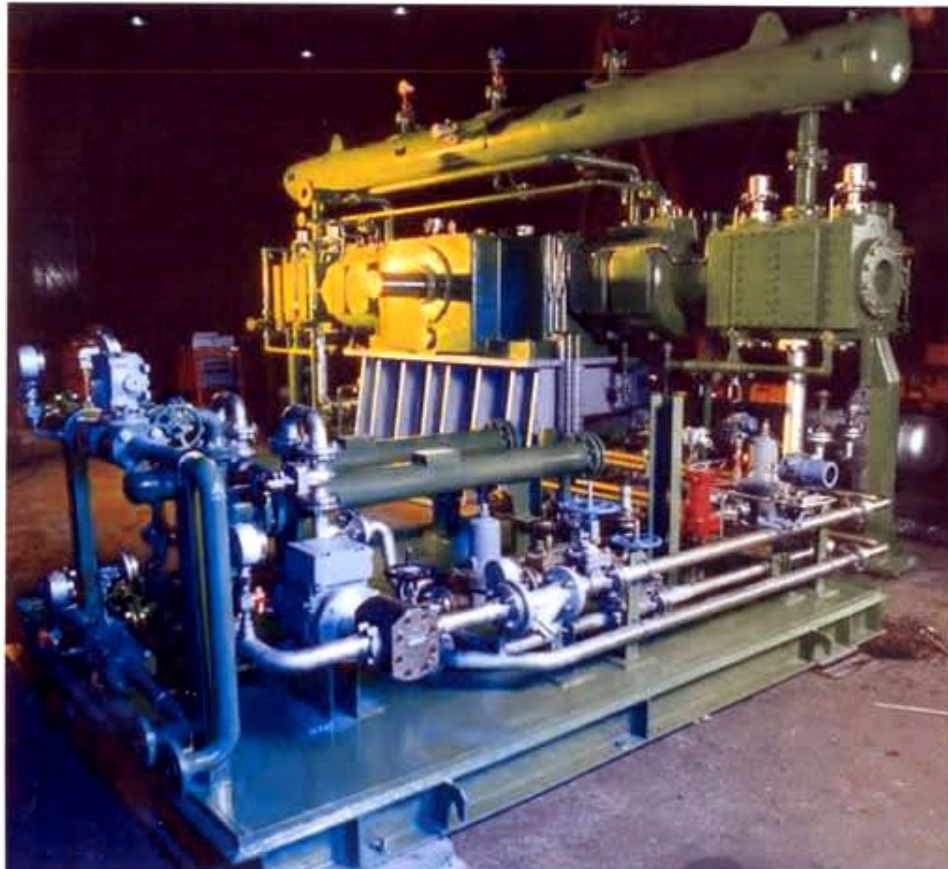
**Power :** 220 kW

[Return to  
Reference List](#)

---

## Hydrogen (H<sub>2</sub>) (page 3 of 5)

---



**Customer :** China  
**Installation:** China  
**Model :** 1 EHPX 2 GTML  
**Gas :** Hydrogen + H<sub>2</sub>S  
**Inlet pressure :** 13 bar(g)  
**Discharge pressure :**  
20 bar(g)  
**Capacity :** 15.600 Nm<sup>3</sup>/h  
**Power :** 420 kW

[Return to  
Reference List](#)

## Hydrogen (H<sub>2</sub>) (page 4 of 5)



**Customer:** China  
**Installation :** Sudan  
**Model :**  
3 EHPX4 GTML  
**Gas :** Hydrogen  
**Inlet pressure :**  
5 bar(g)  
**Outlet pressure :**  
88 bar(g)  
**Capacity :**  
2.255 Nm<sup>3</sup>/h  
**Power :** 350 kW

[Return to  
Reference List](#)

---

## Hydrogen (H<sub>2</sub>) (page 5 of 5)

---



**Customer:**

Italy

**Installation :** Iran

**Model :** TS2/027-A1

**Gas :** Hydrogen

**Inlet pressure :**

28 bar(g)

**Outlet pressure :**

50 bar(g)

**Capacity :** 211 Nm<sup>3</sup>/h

**Power :** 18 kW

[Return to  
Reference List](#)