
Natural Gas compressors



RECIPROCATING TYPE

- Power : up to 1.500 kW
- Pressure : up to 100 bar (g)

Peculiarities of CH₄ piston compressors :

- Recovery system from packing rings to avoid loss of CH₄ from the unit
- Purging of distance piece and crankcase with inert gas (nitrogen)
- High rotational speed allowed



[Return to
Applications List](#)

Natural Gas (page 1 of 3)



Customer : China

Installation: China

Model : 2 EHD 2 GT

Gas : methane gas peak shaving unit

Inlet pressure:

From 5,38 to 6 bar(g)

Discharge pressure : 52,7 bar(g)

Capacity : 4.200kg/h

Power : 560 kW

[Return to Reference List](#)

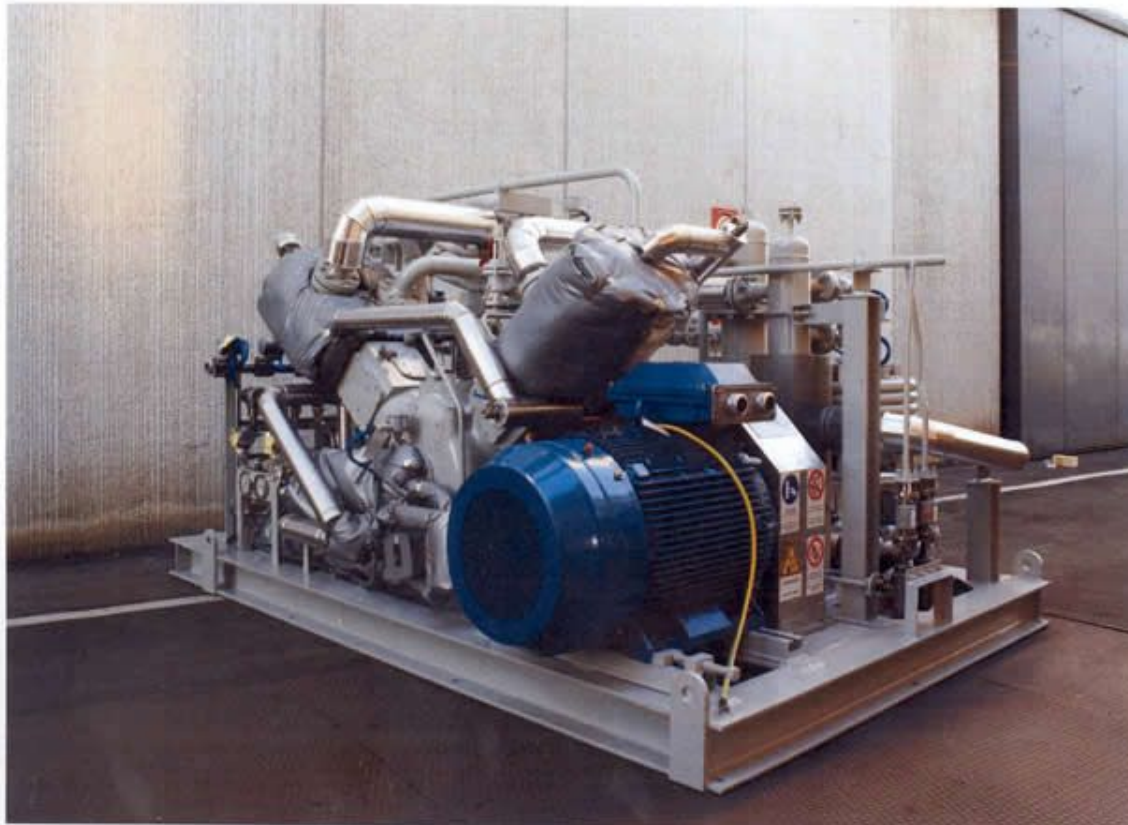
Natural Gas (page 2 of 3)



Customer : Italy
Installation : Italy
Model : MS3-2240-B2
Gas : natural gas + H2
Capacity : 760 m3/h
Inlet pressure : 6 bar(g)
Discharge pressure :
32 bar(g)
Power : 355 kW

[Return to
Reference List](#)

Natural Gas (page 3 of 3)



Customer : Germany
Installation : Iran
Model : MS3-2240-B2
Gas : natural gas
Capacity : 684 Nm³/h
Discharge pressure :
33 bar(g)
Power : 80 kW

[Return to
Reference List](#)