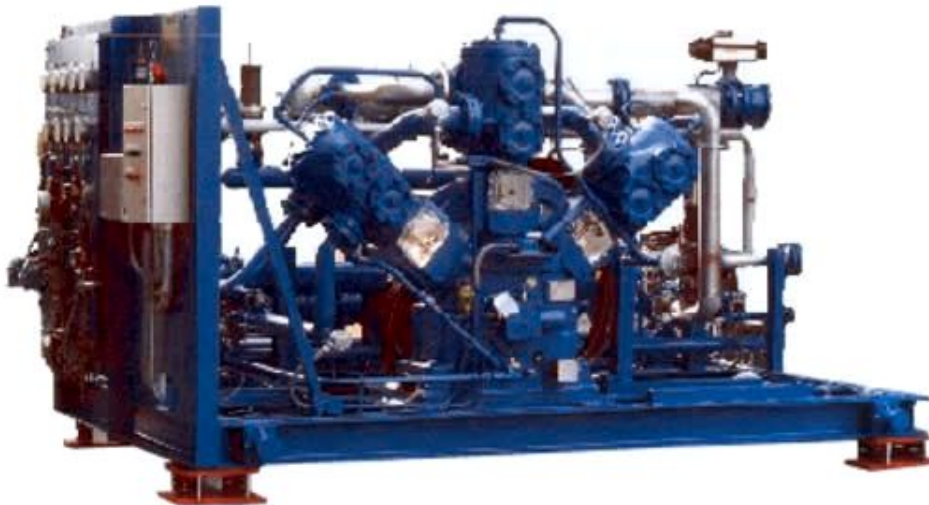

Oxygen (O₂) compressors



RECIPROCATING TYPE

- Power : up to 1.500 kW
- Pressure : up to 45 bar (g)

Peculiarities of O₂ piston compressors :

- Special cleaning for oxygen use
- Compatibility of used materials with oxygen
- Separation between lubricated parts and process
- Detailed piping design to avoid O₂ impingement

[Return to
Applications List](#)

Oxygen (O₂) (page 1 of 5)



Customer :

United Kingdom

Installation : Brazil

Model : WS3/900-B3H

Gas : Oxygen

Inlet Pressure : 1 bar(g)

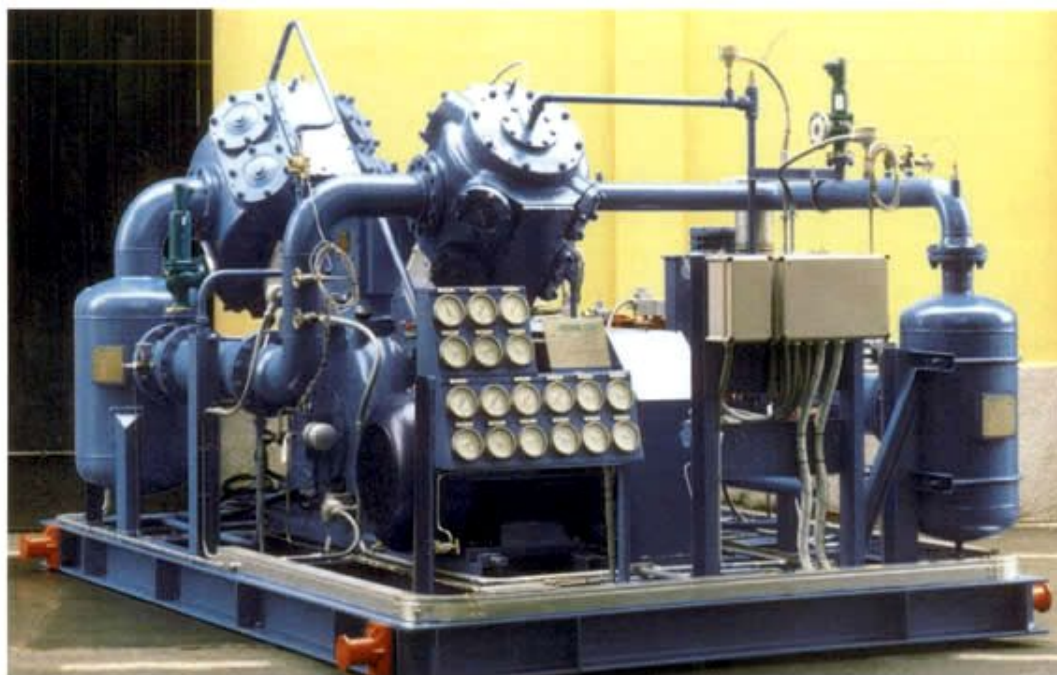
Discharge Pressure : 15,5
bar(g)

Capacity : 715 Nm³/h

Power : 117 kW

[Return to
Reference List](#)

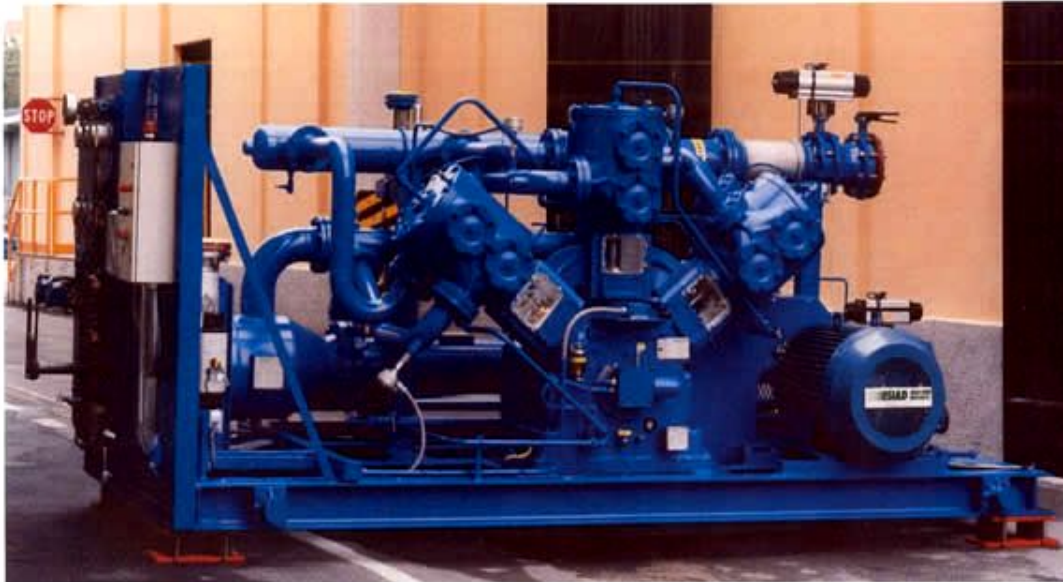
Oxygen (O₂) (page 2 of 5)



Customer : Italy
Installation : Egypt
Model : MS2/1552-B2H
Gas : Oxygen
Inlet Pressure : atm
Discharge Pressure :
4 bar(g)
Capacity : 1.700 Nm³/h
Power : 135 kW

[Return to
Reference List](#)

Oxygen (O₂) (page 3 of 5)



Customer :

France

Installation : Finland

Model : WS3/500-A2H

Gas : Oxygen

Inlet Pressure : 3 bar(g)

Discharge Pressure :
17 bar(g)

Capacity : 1.190 Nm³/h

Power : 117 kW

[Return to
Reference List](#)

Oxygen (O₂) (page 4 of 5)



Customer :

Germany

Installation : China

Model : MS2/1502-A2H

Gas : Oxygen

Inlet Pressure : atm

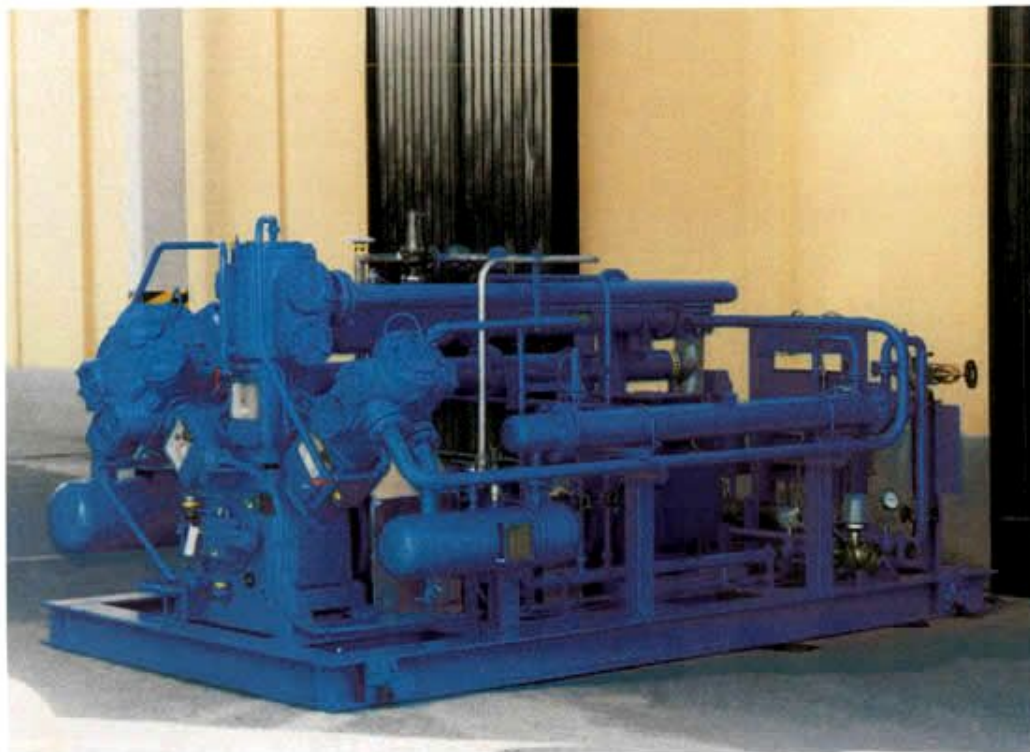
Discharge Pressure :
12 bar(g)

Capacity : 1.413 Nm³/h

Power : 250 kW

[Return to
Reference List](#)

Oxygen (O₂) (page 5 of 5)



Customer : Italy
Installation : Iran
Model : WS3/900-A3H
Gas : Oxygen
Inlet Pressure : 5 bar(g)
Discharge Pressure :
31 bar(g)
Capacity : 870 Nm³/h
Power : 150 kW

[Return to
Reference List](#)