
Propylene (C_3H_6) compressors

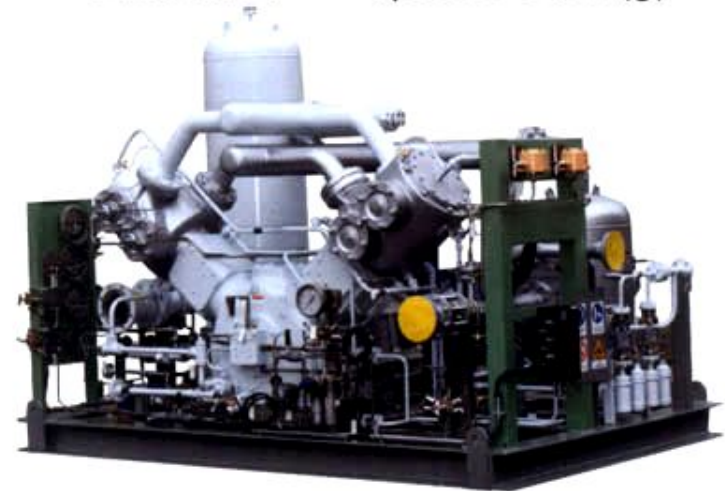


Peculiarities of C_3H_6 piston compressors :

- Recovery system from packing rings to avoid loss of C_3H_6 from the unit
- Purging of distance piece and crankcase with inert gas (nitrogen)

RECIPROCATING TYPE

- Power : up to 1.500 kW
- Pressure : up to 200 bar (g)



[Return to
Applications List](#)

Propylene (C_3H_6) (page 1 of 2)

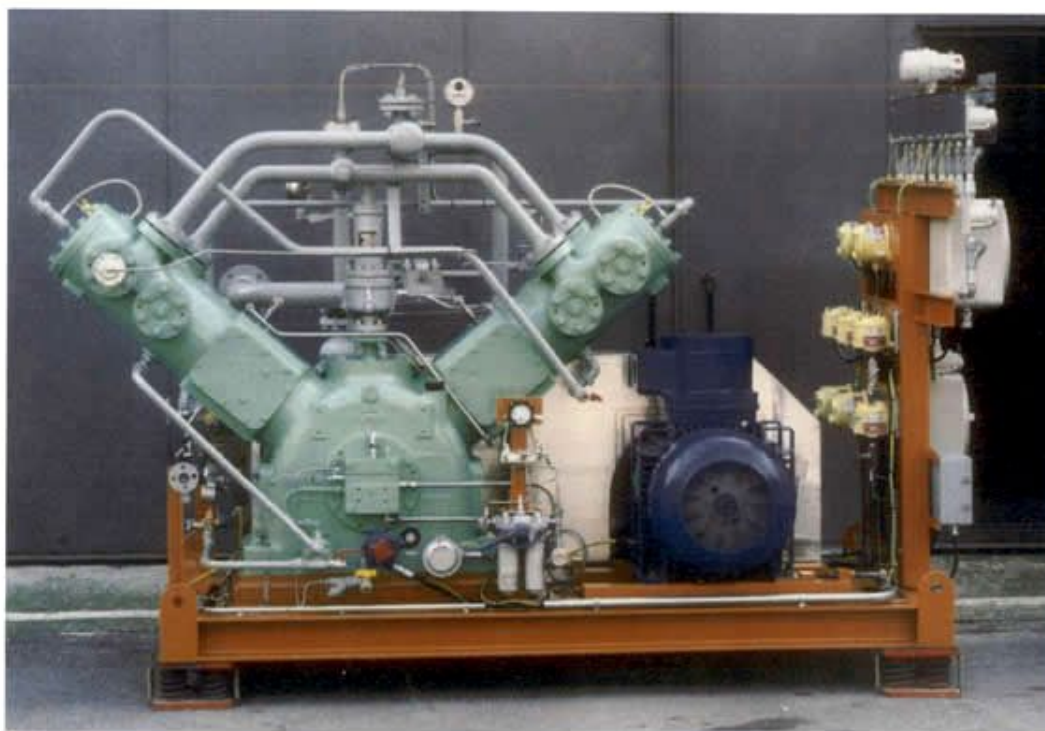


Customer : Italy
Installation : Italy
Model : TS2-150-C2
Gas : C_3H_6
Capacity : 145 m³/h
Inlet pressure : 3 bar(g)
Discharge pressure :
23 bar(g)
Power : 23 kW

[Return to
Reference List](#)

Propylene (C_3H_6) (page 2 of 2)

SIAD MACCHINE
IMPIANTI



Customer : Italy
Installation : Iran
Model : WS2-124-A1
Gas : $C_3H_6 + H_2$
Capacity : 1.620 Nm³/h
Inlet pressure : 18 bar(g)
Discharge pressure :
52 bar(g)
Power : 85 kW

[Return to
Reference List](#)